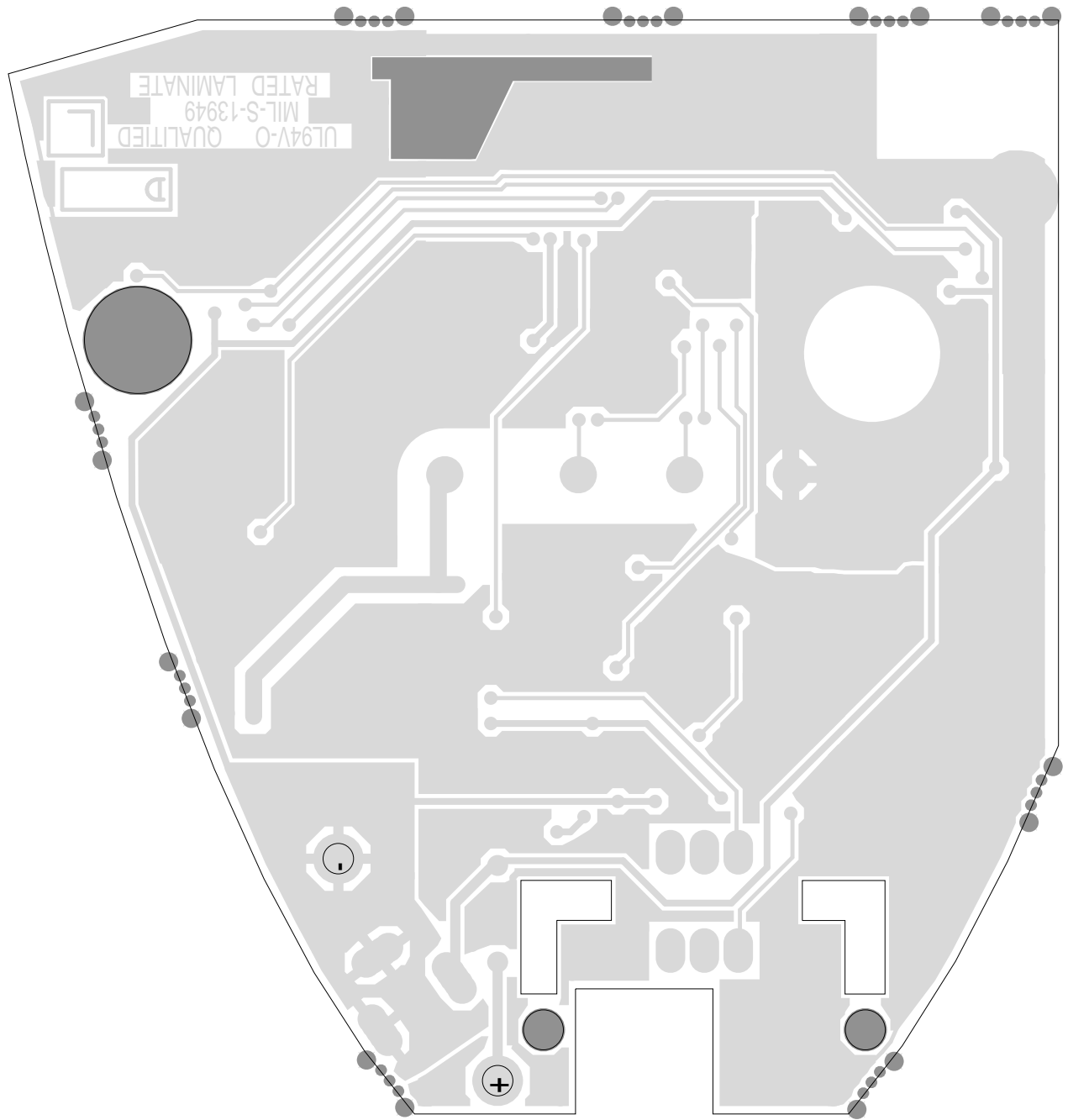


TAIT ELECTRONICS IPN: 220-01411-08 A ISS: 1.1 TA DATE: 12 Feb 2001

CHARGER PCB LAYOUT - TOP SIDE

Scale: 2:1 ; Rotation: 270 degrees



<b>TAIT ELECTRONICS</b>	IPN:	ISS:	ID:	DATE:
	220-01411-08	A	2.BA	12 Feb 2001
<b>CHARGER PCB LAYOUT - BOTTOM SIDE</b>				

Scale: 2.1:1 ; Rotation: 90 degrees